



Country Notes



Country Patchwork Quilt Guild
PO Box 365, Marshall, MO 65340
www.countrypatchworkquilters.com

Volume 20, Issue 3
September 2008

From the President -

Hi Everyone,

I have a question I would like to know who turned the heat and humidity up, we will have to talk. Other than that I've been busy doing bazaar items, and thought of an idea for another miniature (but only it Rita needs another one). Kathryn J has some miniatures from Betty E that still need to be quilted if you can help please give Kathryn a call. We can always use bazaar items, miniatures and don't forget those fat quarters, some Christmas and some not. At least Michael doesn't need any more yo-yo's that's a first.

For lunch next guild meeting it will be a pot luck lunch so bring something tasty, and items to work on, there will be items to work on if you don't have any ideas. If you have items to put in the bazaar be sure to bring them to the meeting so the bazaar will have a good count of what they have, plus your miniatures, only about 5 weeks away. Enjoy your Labor Day holiday stay safe.

Think of who you would like to invite to the luncheon so you can sign them up.

Guess I'll go remove my cats from my sewing table, and ironing board and finish my bazaar items I started today. Will see you September 9, at 9:00am. for the workshop and 1:00pm for the meeting.

Donna



See Page 5 for important information regarding trip to Kansas City to the Belger Arts Center!!

Paula S - Winner of August Friendship Drawing

I am originally from Marshall. I spent twenty years moving around the country/world with my husband in the Army. After retiring and moving back to Missouri, we settled down in Concordia. We have one daughter and twin granddaughters. I learned to sew in high school. My mom is a charter member of the guild and always had fun stories to share about the things the guild was doing. It sounded like a great group to be a part of. She encouraged me to learn how to make a quilt. She is always ready to help me when I have trouble with a project. I've been hooked on quilting ever since. Appliqué is my favorite and paper piecing is a close second.

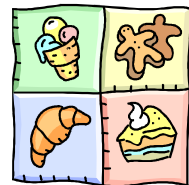


Other things I enjoy doing: being a grandma, reading, watching Chiefs football, and fishing. I'm a member of VFW Ladies Auxiliary, American Legion Auxiliary, and American Red Cross. I'm also helping the Women's Ministry at church make a quilt for a student from Belarus. My block is paper piecing Flying Geese in warm, autumn colors.

Refreshments for
September
meeting -

Eileen H

Mary Vale J



Please see Janie C if you haven't signed up for refreshments!



**Country Patchwork Quilt Guild
Regular meeting August 12, 2009**

President Donna R called the meeting to order. She welcomed guests Amy S, Donna M, and Nancy G. The minutes of the July 8 meeting were approved as written in the newsletter. The treasurer's report was approved as printed in the newsletter.

Program chairs Micki U and Michael M stated that Rita M would present a trunk show of her marvelous quilts at the September meeting. In November Pam F from Quilter's Harvest will give a "jelly roll" workshop. Members may purchase jelly rolls the day of the meeting or have their own in advance. Patterns may be purchased for \$8.

Newsletter Micki U told members to let her know if they were not receiving a letter, either by e-mail or US mail.

Charity Norma Jeane F and Marlyn M asked members to talk to machine quilters about the possibility of them donating their time to quilt one of the Quilt-a-thon quilts. Katherine S displayed a charity quilt that she had finished by hand. Members were asked to donate their time if they were able to machine quilt.

Friendship Katherine S announced that this month's winner is Paula S. Donna B collected her completed blocks and Michael M distributed his blocks for delectable mountains with Southwest fabric.

Door prize Dorothy R had fabric for the winners Donna B, Michael M, and Lois H.

Hospitality Janie C reminded members to sign up for refreshments if they hadn't already.

Greeter Lois H collected 25 cents from a member without a name tag.

Quilt Show 2008 co-chairs Betty L and Kathy C reminded members that quilt forms for the show are due immediately. There is a need for more quilts, clothing, and props. Unsold tickets and money for sold tickets need to be turned in at the next meeting. Quilt show sign-up lists were passed around and members were reminded to participate in the show. Members who have not signed up for a job at the show should call Betty.

It was announced that a bag of fat quarters that were to be in the show are missing. Members were asked to check their sewing bags for the wayward fabrics.

Members voted to keep the mini-quilt silent auction as it was last year: two drawings, one on Saturday and one on Sunday.

Bazaar Michael M, Karen G, Lavonne B, Marlyn M, Micki U, and Norma Jeane F thanked those members who have already made items for the bazaar. Members were reminded that the bazaar area will be divided by seasonal colors and holidays. The "fall" area will sell pumpkin, zucchini, etc. breads and cookies. They should be well wrapped in clear plastic wrap with a tie, a label, and a price.

Quilt Show 2009 co-chairs Norma Jeane F and Donna R announced that the 2009 raffle quilt has been



chosen and written permission given to copy it. Fabric has been purchased and packaged and will be distributed to members at the September meeting.

New Business It was announced that Ramona M donated fabric to the Guild and was available immediately.

Show and Tell Kathryn J, mini's by Betty E; Betty Sue S, crazy quilt for silent auction, friendship quilt from two years ago, antique sampler; Katherine S, Quilt-a-thon strippy quilt she hand quilted, 2 mini's, items for the bazaar; Donna B, scrappy "fancy 9-patch"; Norma Jeane F, Boo/spider wall-hanging, items for the bazaar; Michael M yo-yo garland; Amanda M, quilt for the bazaar, Quilt-a-thon quilt; Janie C, appliqué lavender grapes/white quilt; Lavonne B, items for the bazaar; Millie M, 4-patch for a grandson; Rita M, stack 'n' whack; Donna R, Ohio star/log cabin. Gayle S told the members that her crazy quilt tumbling blocks wall hanging was juried into the Houston show.

Meeting was adjourned and Michael M introduced Marlyn M who displayed quilts made for the Baptist Children's Home.

Please add the following new members to your Membership book --

Nancy G

Donna M

Loretta H... has a new mailing address.

Plan to come for the day! September 9 our "work" will begin at 9 a.m. We will be finishing up our bazaar projects! Bring a dish to share for a pot luck at noon!

News about the 2008 Quilt Show - HOLIDAY HAPPENINGS!

Kathy and I have been busy, (as have all the committees) getting the little details finalized for this years show. We still need your "fat quarters", both Christmas fabrics and regular quilt fabric for our fat Quarter baskets. This year, they are fat quarter BAGS, which can be used for your quilt supplies after your name is drawn .

Be sure to sign up to work a time slot or two in the various areas of the show. We always need help in these jobs. Also consider signing up for supplying props. We will need several small tables this year to hold some of the seasonal decorations that we will be using.

Don't forget we need strong men and ladders for the set-up on Thursday night, we can get into the area at 7 p.m. so if you can come, we need you.

Keep up the good work - things look great for the show.

Betty



**Country Patchwork Quilt Guild
Board Meeting- August 19, 2009**

Held at the YMCA. Those attending were Donna R, Rita M, Kathy C, Betty L, Karen G, Michael M, Micki U and Norma Jeane F.

President Donna R called the meeting to order. Minutes of the July board meeting were approved as printed in the newsletter.

Treasurer, Karen G, distributed the updated financial statement and it was approved. She reported that two new credit cards were issued from Wood and Huston bank and the old Visa card was cancelled. She stated that she received a Thank You for the Guild's donation to Relay for Life.

Michael M, Program co-chair, reported that Rita M will present a trunk show at the September meeting. The morning of the September 9 meeting will be a work session and members are asked to bring any bazaar items they are working on along with the usual sewing supplies and artsy embellishments. Lunch that day will be a pot luck.

The October 14 luncheon at the Cumberland Church will cost \$11. Guests are welcomed. Michael will have a sign up sheet for members. Program that day will be Juanita Y.

Newsletter chair, Micki U, stated that members should let her know whether they want e-mail or not.

Quilt Show 2008 co-chairs Betty L and Kathy C went over the show details, tables needed, need for members to be involved with the show, and the need for more quilts and props. Bazaar committee described their plans and need for more bazaar items.

Quilt Show 2009 co-chairs Donna R and Norma Jeane F shared their raffle quilt design and distributed several packets to board members who wanted to get an early start on the blocks. They announced that the packets would be available to all members at the September meeting.

Meeting adjourned.

Respectfully submitted,
Norma Jeane F, Secretary

Happy Birthday!!!

Anita C	September 2
Micki U	September 4
Nancy G	September 12
Karen G	September 21
Donna B	September 26



All information for newsletters must be received by the 25th of each month. Please email all information to—or send by USPS to
Micki U



The day trip to Kansas City to the Belger Arts Center is planned for Wednesday, September 3. We will leave Marshall at 8:30 a.m. We plan to arrive at the Belger Center at 10 a.m. and tour the gallery. The gallery currently has two displays -- "Inspiration: African-American Quilts from the Collection of Maude Wahlman" (below) and "Interpretation: Silver Screen Quilts by Sun Smith-Foret" (right). After the gallery, we will travel south to the Plaza and have lunch (probably with dessert) at the Cheesecake Factory. If there is time to stop by a shop (or two), I'm sure we could find some fabric.



Admission to the Gallery is free. Gas will be provided by the guild. Lunch (and shopping) will be your only expense.

Contact Micki or

Michael

as soon as possible so we can plan transportation. Deadline will be August 29!

More information about the display is available at www.belgerartscenter.org

At the September meeting, we will be signing up for the October Luncheon. Please mark your calendars for October 14! You know, we will be celebrating another successful show! The luncheon will be held at the Cumberland Presbyterian Church -- starting at 11 a.m. Lunch will be served at 12 noon. Our guest speaker will be Juanita Y. Lunch will be \$11. Please plan to come and bring a guest!



Don't forget your fabric scraps for the gift bazaar and also the fat quarters for the fat quarter bags!

If you have any questions regarding the quilt show, please contact Betty or Kathy!

CALENDAR OF EVENTS

- September 6 - St. Charles, MO Quilts on Main
- September 19 - 20 Higginsville American Legion Hall, Friday 10 a.m. - 7 p.m., Saturday 9 a.m. - 2 p.m.
- September 27 - 28 Country Patchwork Quilt Guild Quilt Show
- October 30 - November 2 International Quilt Festival/Houston George R. Brown Convention Center Houston, TX
- November 22 - 23 Booneslick Trail Quilters' Guild 2008 QUILT SHOW Holiday Inn Expo Center 2200 I-70 Drive SW Columbia, MO

